

CPLC's



PARENTING ARIZONA™

Safe children. Strong families.

Subsidiary of CPLC

Services Evaluation Report

**PA Statewide
January 1– June 30, 2008**

Prepared by:

CPLC Research and Evaluation Department

August 25, 2008

Table of Contents

Table of Contents	2
Method.....	3
Service Utilization and Demographics	3
Discussion and Recommendations.....	9
Discussion.....	9
Recommendations	9

Method

Parenting Arizona (PA) collects statewide data regularly on participants' demographic characteristics and types of outcome associated with their participation in PA services. The purpose of the data collection is to furnish the Research & Evaluation Department with the necessary data to assess program outcomes and enhance the services delivered.

PA staff members administer a single instrument to all persons participating in services throughout the state of Arizona. When possible, the instrument is administered at pre- and post-participation of services to collect self-report data regarding attitudes and behaviors that operationalize key aspects of parent/child relationships. For some programs, an additional follow-up administration occurs at a subsequent appointment mandated by a funding source. In other cases, administration of the instrument is not possible. When this occurs, program staff members only collect demographic information.

PA staff members take the instruments back to their offices and enter the data into a web-based application jointly administered by CPLC's Research and Evaluation (R&E) and Information Technology Departments. The data is then retrieved by R&E, imported into databases created using the Statistical Package for the Social Sciences (SPSS), and analyzed using the written SPSS syntax program.

This report provides information regarding services delivered by Parenting Arizona in the last six months.

Service Utilization and Demographics

		Program Site			
		Frequency	Percent	Valid Percent	Cumulative Percent
Valid	Phoenix	84	15.1	15.1	15.1
	Flagstaff	174	31.3	31.3	46.4
	Cottonwood	48	8.6	8.6	55.0
	Tucson	48	8.6	8.6	63.7
	Tuba City	15	2.7	2.7	66.4
	Winslow	172	30.9	30.9	97.3
	Prescott	1	.2	.2	97.5
	Page	14	2.5	2.5	100.0
	Total	556	100.0	100.0	

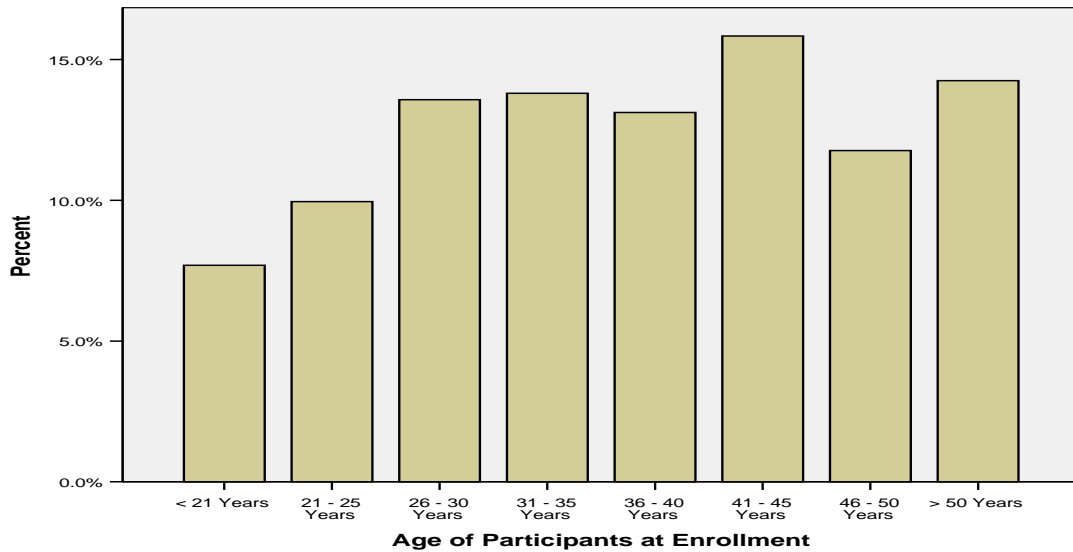
174 persons have received PA services at Flagstaff, while 172 received services at Winslow. Services provided at Flagstaff and Winslow constitutes 61% of PA statewide services.

Descriptive Statistics					
	N	Minimum	Maximum	Mean	Std. Deviation
Age of Participants at Enrollment	421	5.00	68.00	36.5653	11.42339
Valid N (listwise)	421				

The average age of participants is 36.6 years.

Parenting Arizona Statewide
August 25, 2008

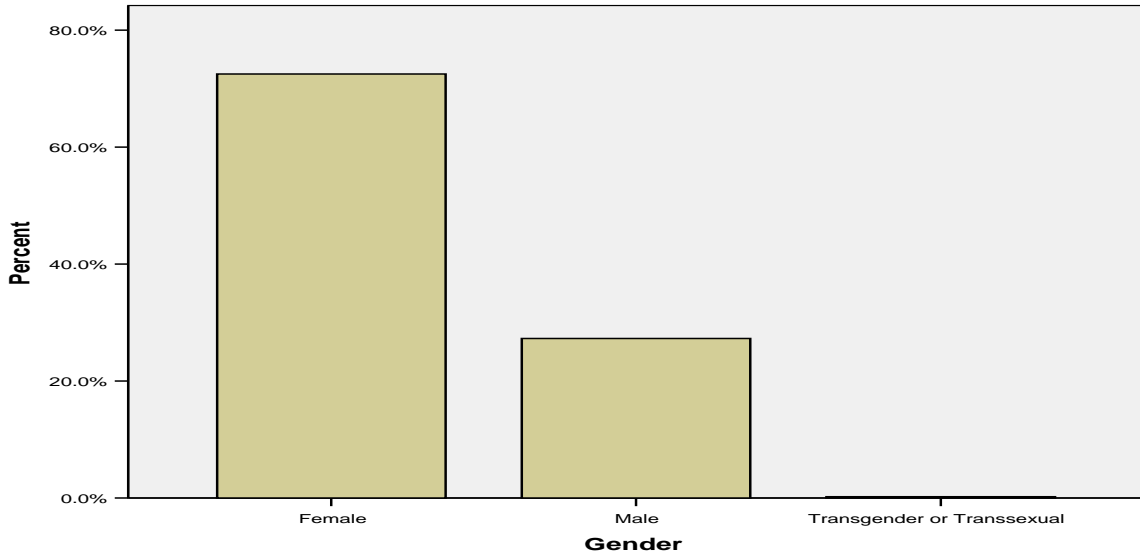
		Age of Participants at Enrollment			
		Frequency	Percent	Valid Percent	Cumulative Percent
Valid	< 21 Years	34	7.3	7.7	7.7
	21 - 25 Years	44	9.5	10.0	17.6
	26 - 30 Years	60	13.0	13.6	31.2
	31 - 35 Years	61	13.2	13.8	45.0
	36 - 40 Years	58	12.5	13.1	58.1
	41 - 45 Years	70	15.1	15.8	74.0
	46 - 50 Years	52	11.2	11.8	85.7
	> 50 Years	63	13.6	14.3	100.0
	Total	442	95.5	100.0	
Missing	System	21	4.5		
Total		463	100.0		



15.8% of participants are between 41 and 45 years of age.

		Gender			
		Frequency	Percent	Valid Percent	Cumulative Percent
Valid	Female	335	72.4	72.5	72.5
	Male	126	27.2	27.3	99.8
	Transgender or Transsexual	1	.2	.2	100.0
	Total	462	99.8	100.0	
Missing	System	1	.2		
Total		463	100.0		

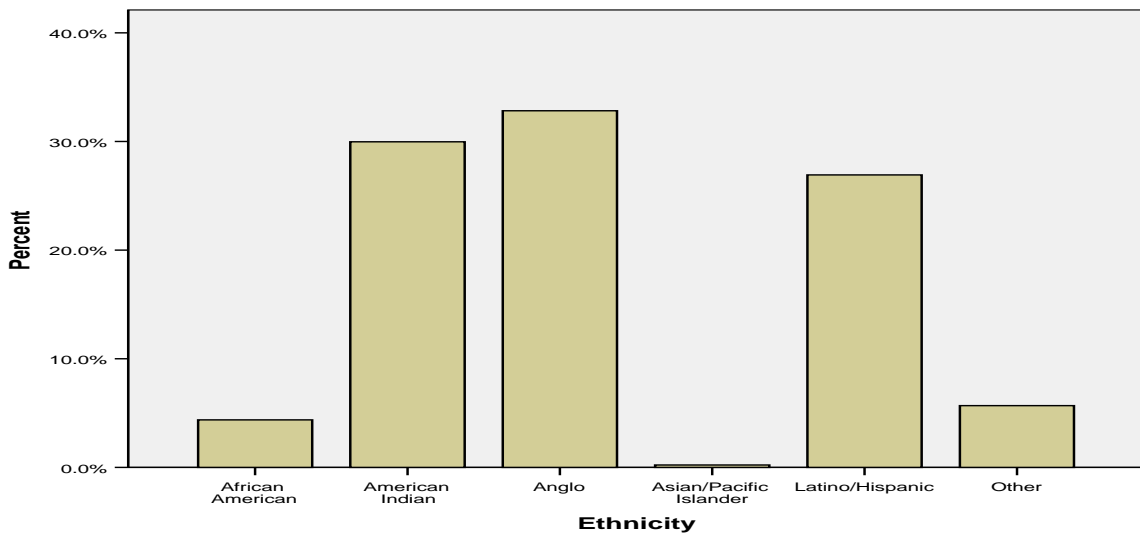
Parenting Arizona Statewide
August 25, 2008



72.5% of the participants are female, while 27.3% are male.

Ethnicity

		Frequency	Percent	Valid Percent	Cumulative Percent
Valid	African American	20	4.3	4.4	4.4
	American Indian	137	29.6	30.0	34.4
	Anglo	150	32.4	32.8	67.2
	Asian/Pacific Islander	1	.2	.2	67.4
	Latino/Hispanic	123	26.6	26.9	94.3
	Other	26	5.6	5.7	100.0
	Total	457	98.7	100.0	
Missing	Missing	3	.6		
	System	3	.6		
	Total	6	1.3		
Total		463	100.0		

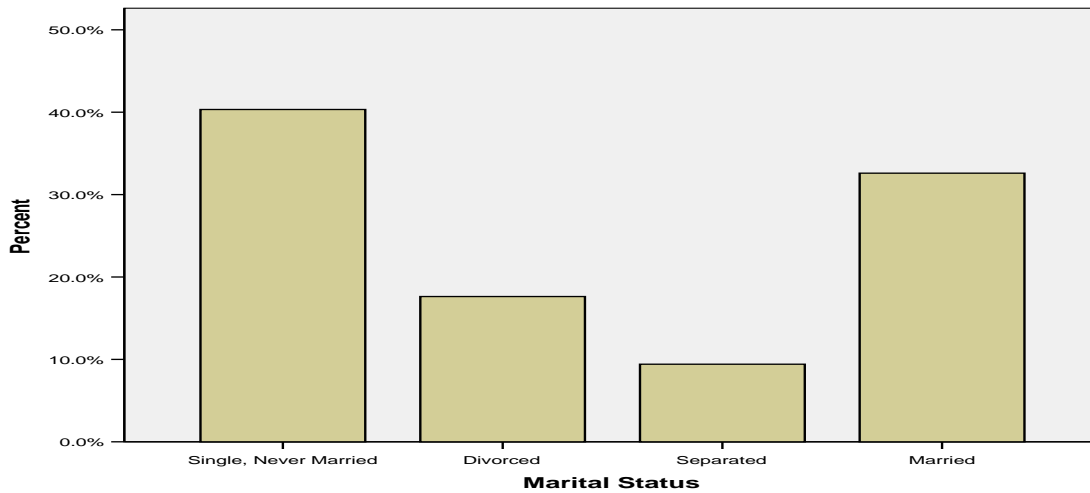


Parenting Arizona Statewide
August 25, 2008

32.4% of participants reported that they are of Anglo ethnicity, 30% are of Native American ethnicity, and 26.9% are of Latino ethnicity.

Marital Status

		Frequency	Percent	Valid Percent	Cumulative Percent
Valid	Single, Never Married	167	36.1	40.3	40.3
	Divorced	73	15.8	17.6	58.0
	Separated	39	8.4	9.4	67.4
	Married	135	29.2	32.6	100.0
	Total	414	89.4	100.0	
Missing	Missing	48	10.4		
	System	1	.2		
	Total	49	10.6		
Total		463	100.0		

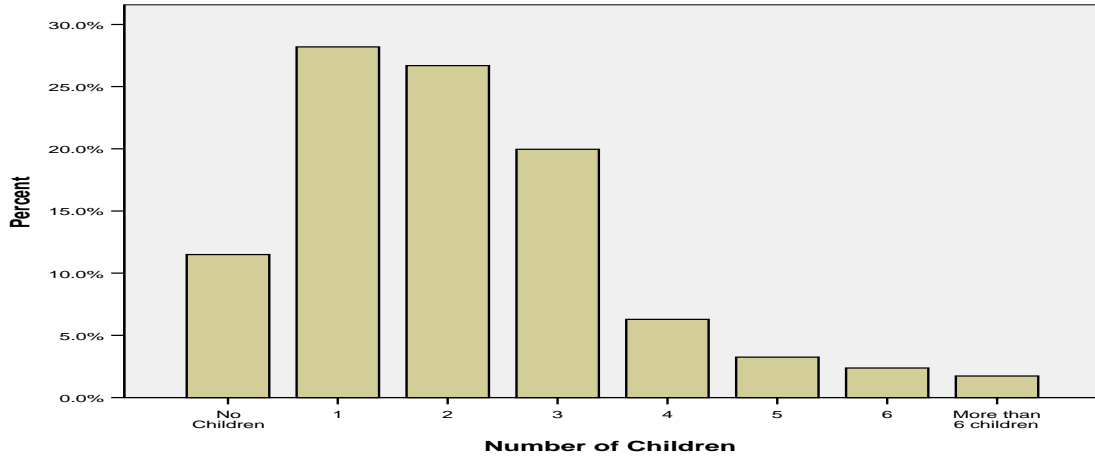


40.3% of participants reported being single/never been married, while 32.6% reported being married.

Number of Children

		Frequency	Percent	Valid Percent	Cumulative Percent
Valid	No Children	53	11.4	11.5	11.5
	1	130	28.1	28.2	39.7
	2	123	26.6	26.7	66.4
	3	92	19.9	20.0	86.3
	4	29	6.3	6.3	92.6
	5	15	3.2	3.3	95.9
	6	11	2.4	2.4	98.3
	More than 6 children	8	1.7	1.7	100.0
	Total	461	99.6	100.0	
Missing	System	2	.4		
Total		463	100.0		

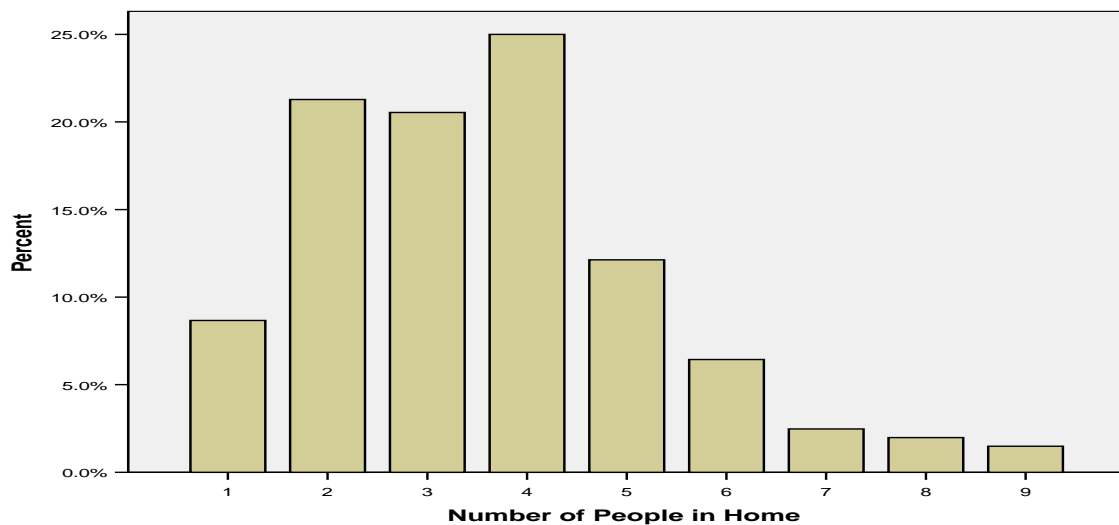
Parenting Arizona Statewide
August 25, 2008



28.2% of the participants reported having one child, 26.7% reported having 2 children, and 20% reported having 3 children.

Number of People in Home

		Frequency	Percent	Valid Percent	Cumulative Percent
Valid	1	35	7.6	8.7	8.7
	2	86	18.6	21.3	30.0
	3	83	17.9	20.5	50.5
	4	101	21.8	25.0	75.5
	5	49	10.6	12.1	87.6
	6	26	5.6	6.4	94.1
	7	10	2.2	2.5	96.5
	8	8	1.7	2.0	98.5
	9	6	1.3	1.5	100.0
		Total	404	87.3	100.0
Missing	System	59	12.7		
Total		463	100.0		



The mode of the number of persons in the household was 4, while the average number of people living in the home was 3.59.

Outcome Data

Observation Wave

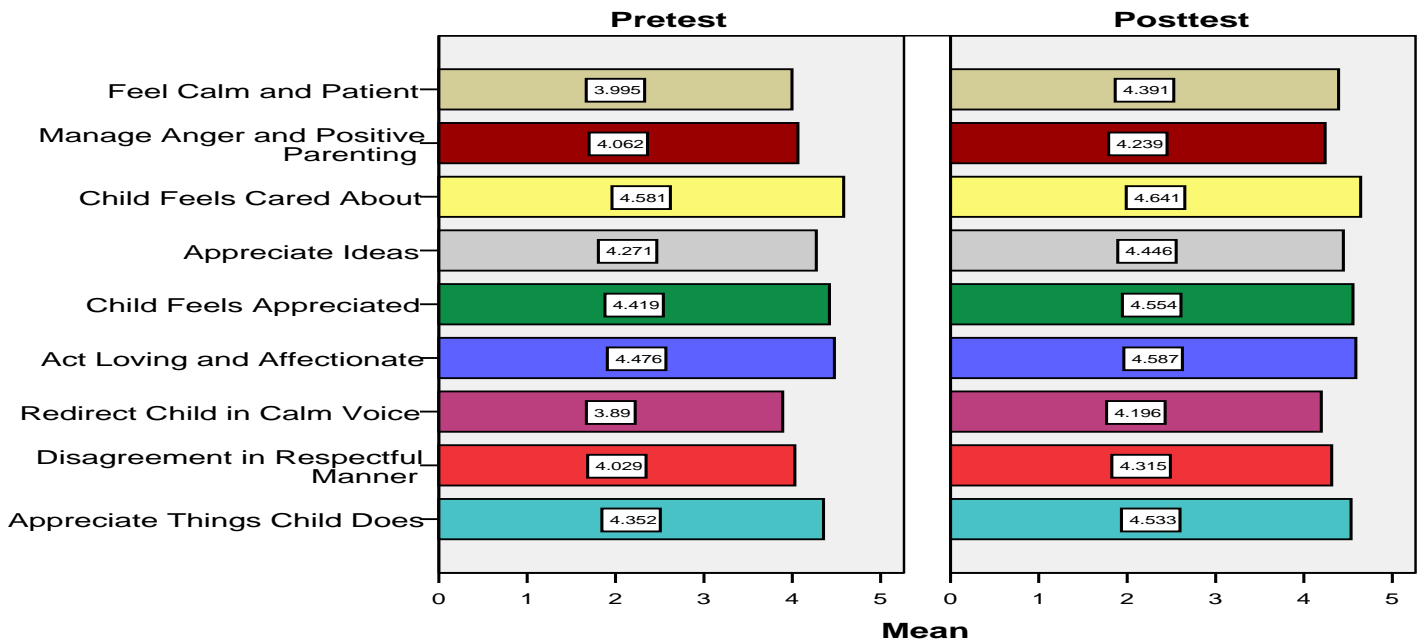
		Frequency	Percent	Valid Percent	Cumulative Percent
Valid	Pretest	227	40.8	40.8	40.8
	Posttest	93	16.7	16.7	57.6
	Demographic Data Only	236	42.4	42.4	100.0
	Total	556	100.0	100.0	

227 of the participants have completed a pretest, 93 have completed a posttest and demographic information only was collected on 236 participants.

Case Summaries

Observation Wave		Feel Calm and Patient	Child Feels Cared About	Manage Anger and Positive Parenting	Act Loving and Affectionate	Child Feels Appreciated	Appreciate Ideas	Appreciate Things Child Does	Disagreement in Respectful Manner	Redirect Child in Calm Voice
Pretest	Mean	4.00	4.58	4.06	4.48	4.42	4.27	4.35	4.03	3.89
	Std. Deviation	.804	.702	.789	.733	.774	.805	.770	.847	.837
	N	210	210	210	210	210	210	210	210	210
Posttest	Mean	4.39	4.64	4.24	4.59	4.55	4.45	4.53	4.32	4.20
	Std. Deviation	.592	.526	.635	.596	.562	.618	.583	.678	.650
	N	92	92	92	92	92	92	92	92	92
Total	Mean	4.12	4.60	4.12	4.51	4.46	4.32	4.41	4.12	3.98
	Std. Deviation	.767	.653	.749	.695	.718	.756	.722	.809	.796
	N	302	302	302	302	302	302	302	302	302

Observation Wave



The PA instrument uses eight separate Likert scales to assess changes in behaviors and attitudes regarding parent/child relationships. The score for each of the scales is designed to increase when reports of attitudes or behaviors associated with participation in PA services move in the desired or hypothesized direction. The mean score for almost all of the response items on the pre/posttest increased or moved in the hypothesized direction.

Overall, 100% of the respondents (n=73) who completed the two client satisfaction questions stated that they were pleased with the program. They reported that the program met their expectations and that it was helpful as it taught them great parenting skills. Participants emphasized that by participating in the program they improved their communication skills with their children and significant other, learned anger management strategies, effective discipline methods, and conflict resolution skills. In addition, some of the participants stated that they would recommend the class to all parents, especially those going through a divorce.

Discussion and Recommendations

Discussion

Participants reported attending the PA program for several reasons, among them are: Learning effective parenting skills and healthy discipline methods, acquiring conflict management skills, improving communication skills, obtaining access to valuable resources, better connecting with the community, meeting CPS and court mandated requirements, and strengthening their family ties. Participants stated that the program exceeded their expectations and taught them helpful parenting skills which they applied at home. In addition, the outcome data analysis demonstrated that the program was effective in terms of meeting established objectives. Participants reported a perceived increase in their abilities to manage anger and disagreement in a respectful manner, act loving and affectionate, appreciate ideas, redirect their children in a calm voice, appreciate things child does, and making the child feels appreciated. Ultimately, the participants were pleased with the program and learned valuable skills that improved their parenting skills.

Recommendations

This report demonstrates that the evaluation protocol and data collection process are viable and provide the data necessary to develop useful information. At this time we recommend continuing to employ the evaluation protocol and data collection process.